



MYCO-MAGIC TRANSPLANT



All Natural Land Care Supplies

Myco-Magic Transplant is used to inoculate bare-root, B&B, and containerized perennial plants with beneficial mycorrhizal fungi prior to field planting. It contains five superior species of endo- and ectomycorrhizal fungi that will colonize the roots of nearly all perennial plant species under a broad range of growing conditions. Mycorrhizal fungi are an essential part of all plant growth in natural environments. They provide a living link between the plant's feeder root system and the surrounding soil ecology. Extensive field research has proven that the presence of beneficial mycorrhizae greatly improves the survival, growth rates, and disease resistance of seedlings compared to seedlings with few or no mycorrhizal relationships. This is particularly true for seedlings grown in stressed or degraded sites, urban environments, low quality reforestation sites, and arid or tropical regions.

PRODUCT BENEFITS

- Better survival and growth rates after field planting.
- Improved water and nutrient availability.
- Reduced risk of plant loss and damage due to heat and drought stress.
- Improved planting range and performance of difficult-to-grow plant species.

COMPATIBILITY

Species: Myco-Magic can be used on all plant species except rhododendrons, azaleas, laurels, orchids, and blueberries. Myco-Magic will not damage these species but the mycorrhizae will not colonize on their root systems.

Soil pH: The fungi in Myco-Magic were chosen based on their ability to survive and colonize plant roots over a broad pH range.

Fungicides: Many fungicides can have a detrimental effect on mycorrhizae fungi. Soil applications of fungicides near plants treated with Myco-Magic should be avoided but, if unavoidable, allow two weeks before and after using of Myco-Magic.

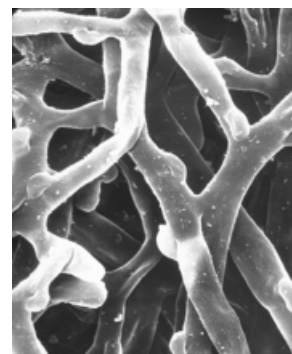
Herbicides: Herbicides do not interfere with mycorrhizal fungi development but may inhibit growth of or cause stress to many plant species.

Insecticides: Insecticides do not interfere with mycorrhizal fungi development but may inhibit growth of or cause stress to many plant species.

USE

Myco-Magic Transplant is applied directly into the transplant hole near the top of the root ball.

Place the tree or shrub in the planting hole and backfill with soil to ~ four inches below grade. Evenly spread Myco-Magic Transplant around the outside edge of the root ball and mix into the soil. Backfill the remaining four inches of soil. Use 3 oz. per foot of root ball diameter or 1 oz. per foot of root ball circumference (circumference = $2\pi r$ [$\pi = 3.14159$, $r = \text{radius} = \frac{1}{2} \text{ diameter}$]). If installing bear root stock, use 3 oz. per 1 inch caliper of tree. For potted plants, use 1 oz. per gallon container.



Mycorrhizae coated roots

Rev. 01/07